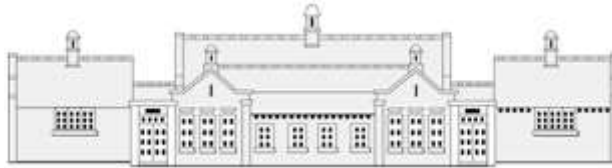


07.11.2017



Inclusion Committee

Terms of Reference

- To monitor the work of the SENCo and consult with the SENCo on issues relating to resources, statements etc and report this to the FGB
- To review the SEN spend on a termly basis
- To agree and monitor specific input into the School Improvement Plan as it relates to SEN
- To review all policies relating to inclusion (with the exception of the Access Plan) – including the SEN policy, Child Protection, Admissions policy, Adult Volunteers Guidelines, Single Equality Policy, Home-School Agreement and G&T Policy
- To report and make recommendations to the FGB on issues relating to any inclusion issue.
- To monitor and review policies and practice related to Safeguarding, including PREVENT and the Child Protection policy.
- To oversee governor visits into school by receiving and monitoring Governor Visit sheets (excluding Key Area governor visits which are monitored by the Full Gov Body).
- To draft and review the Governor Written Statement of Behaviour Principles; to invite feedback from staff, pupils, parents/carers on this document before proposing to the Full Gov Body
- To review and monitor policies and practice relating to Behaviour, including the Behaviour Management policy (including Home-School agreement) and Anti-Bullying policy
- To review the British Values Policy annually

Quorum

- Three governors